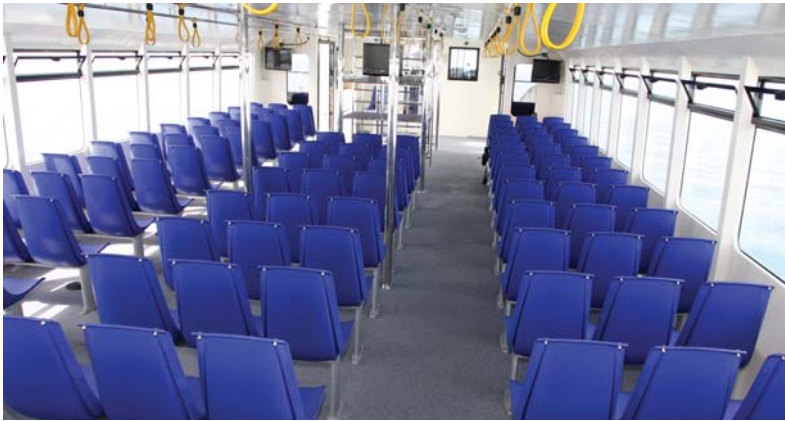


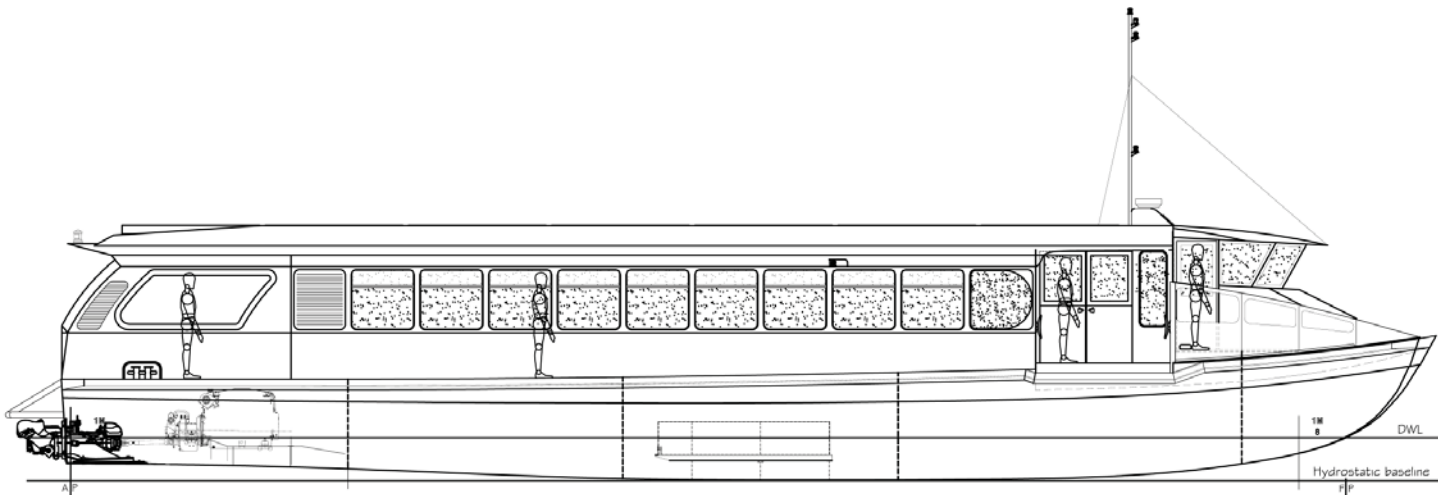
Project Brief - New Construction
 200 Passenger Series I Waterbus



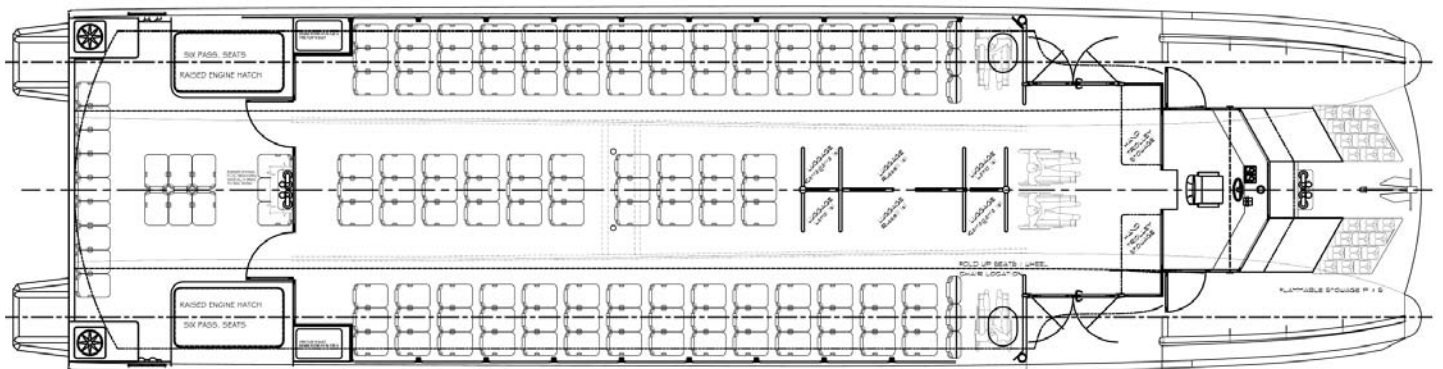
DELIVERED
 Perulpa SEP 2009
 Jumpinpin MAY 2009



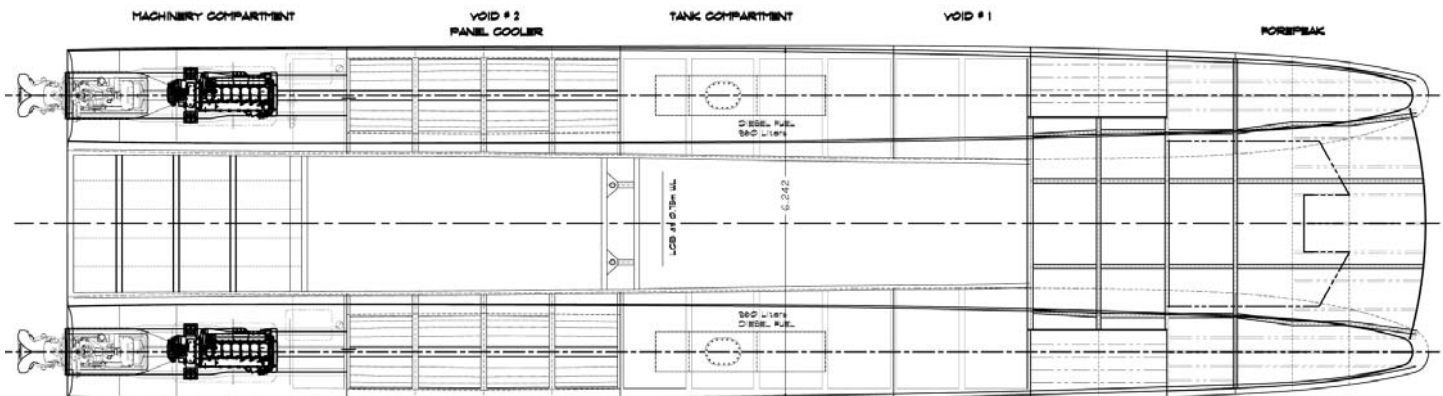
Particulars	
Owner	Bay Islands Transit Systems Australia
Home Port	Moreton Bay, Queensland
Design	Pacific High Seas Design
Construction	Aluminium/Composite
Length (overall)	25.85 metres
Length (measured)	23.98 metres
Length (waterline)	22.40 metres
Beam (overall)	6.5 metres
Draft	0.85 metres
Passengers	200
Crew	2
Systems	
Main Engines	2 x Scania D112 59M 335bkw @ 1,800rpm
Gearbox	2 x Twin Disc MG 5114 SC
Propulsion	2 x Hamilton HJ Waterjet
Fuel	2 x 1,000 litres
Fresh Water	1 x 500 litres
Black Water	1 x 500 litres
Performance	
Service	22 knots
Max	24+ knots
Classification	
Hull	DNV HSLCR2
Machinery	USL 1E
Survey	USL 1E



OUTBOARD PROFILE



MAIN DECK



BELOW DECK