



DELIVERED
JANUARY 2012



Duffy

Particulars

Owner	Transit Systems Australia
Home Port	Gladstone, Queensland
Design	One2Three Naval Architects
Construction	Aluminium
Project Duration	7 months
Length (overall)	17.95 metres
Length (measured)	16.82 metres
Length (waterline)	16.10 metres
Beam (overall)	6.00 metres
Draft	0.76 metres
Passengers	12
Crew	2

Systems

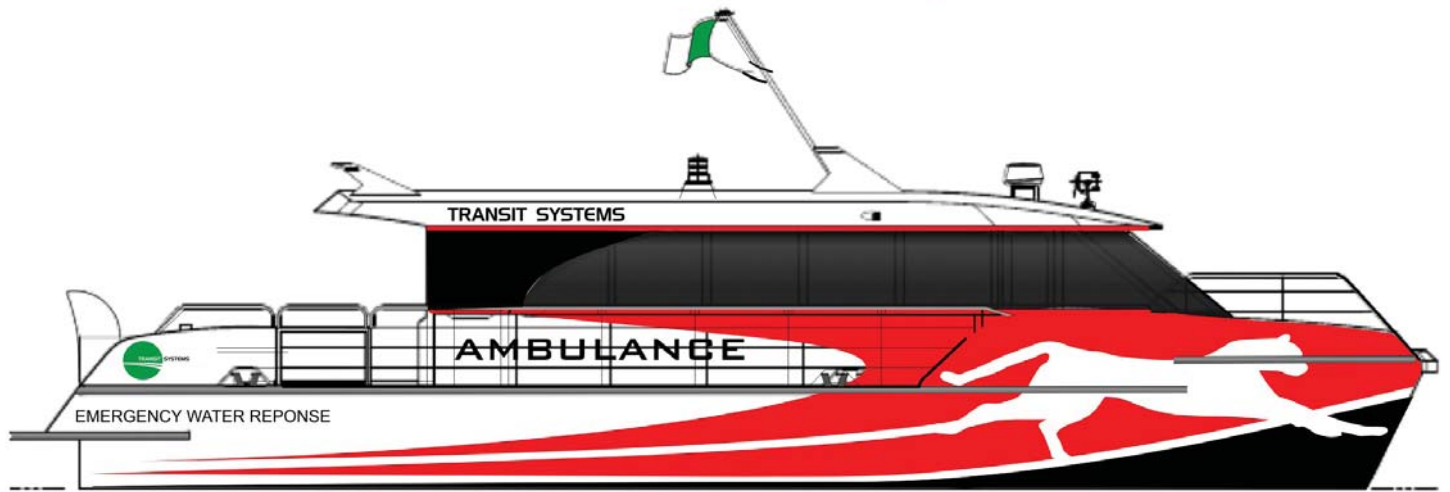
Main Engines	2 x Scania D112 69M 515bkW @ 2,300rpm
Gearbox	2 x Twin Disc MG 5114SC
Propulsion	2 x Hamilton HJ364 Waterjets
Generators	2 x Westerbeke 17.0 EDE 17.0kW @ 1800rpm
Fuel	2 x 1,000 litres
Fresh Water	1 x 250 litres
Black Water	1 x 250 litres

Performance

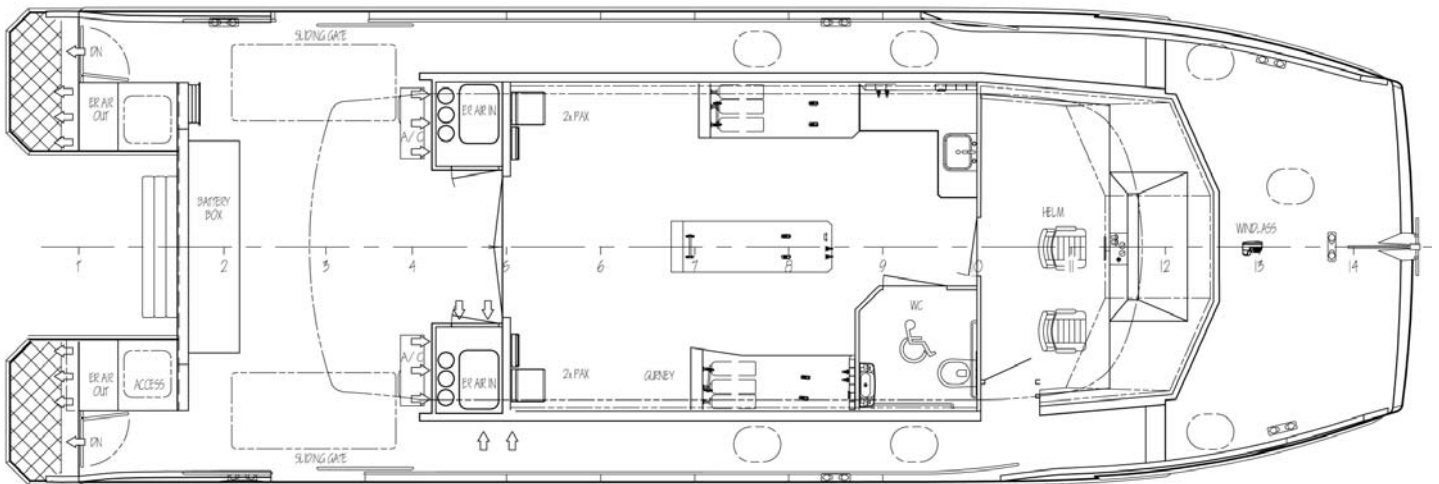
Service	25 knots
Max	30+ knots

Classification

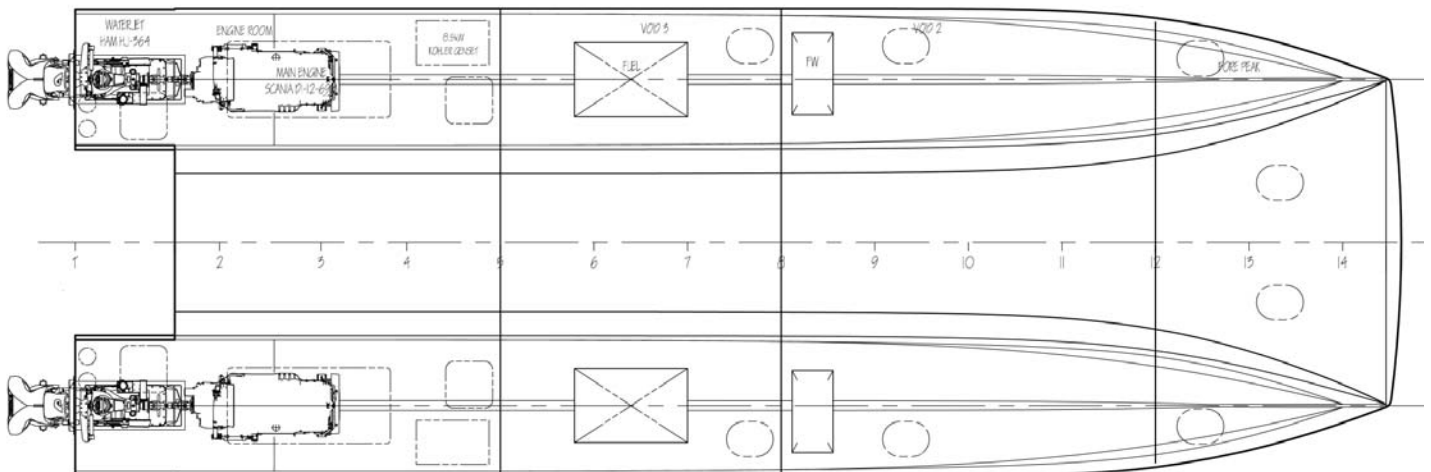
Hull	LR SSC G3
Machinery	AMSA NSCV 2C
Survey	AMSA NSCV 2D



OUTBOARD PROFILE



MAIN DECK



BELOW DECK