

Project Brief - New Construction
200 Passenger Series II Waterbus



	DELIVERED
Brahminy Kite	FEB 2012
Torresian	FEB 2011
Kurrowera I	SEP 2010
A.L Robb	APRIL 2010

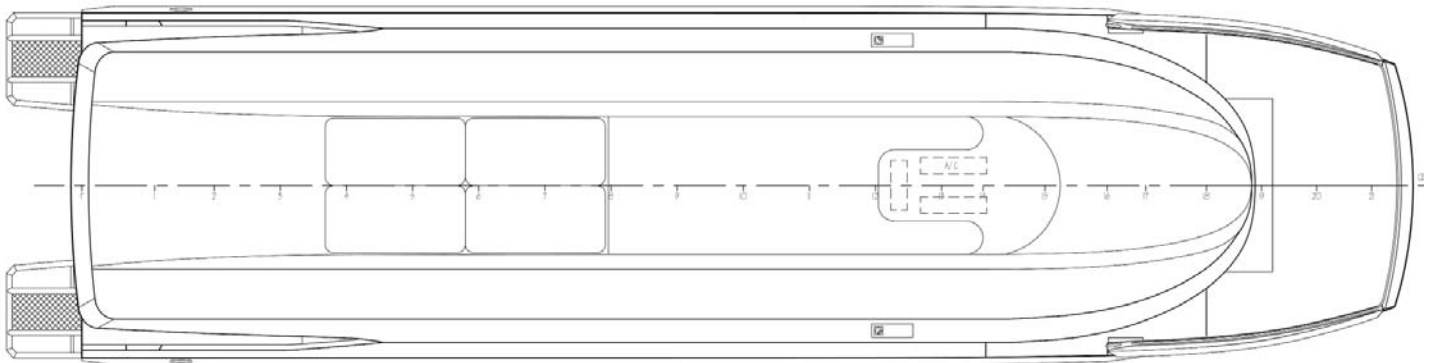


Particulars	
Owner	Bay Islands Transit Systems Australia
Home Port	Redland Bay, Queensland
Design	One2Three Naval Architects
Construction	Aluminium
Length (overall)	23.98 metres
Length(measured)	23.93 metres
Length (waterline)	22.90 metres
Beam (overall)	6.25 metres
Draft	0.97 metres
Passengers	200
Crew	2
Systems	
Main Engines	2 x Scania D112 59M 335bkW @ 1,800rpm
Gearbox	Twin Disc Quick Shaft MGX 6599 SC, 2.45:1
Propulsion	2 x Hamilton Waterjet HJ 403
Generators	1 x Westerbeke 26.0 EDEA 26W @ 1,500rpm
Fuel	2 x 1,000 litres
Fresh Water	1 x 500 litres
Black Water	1 x 500 litres
Performance	
Service	21 knots
Max	25+ knots
Classification	
Hull	DNV HSLCR2
Machinery	USL 1E
Survey	USL 1E

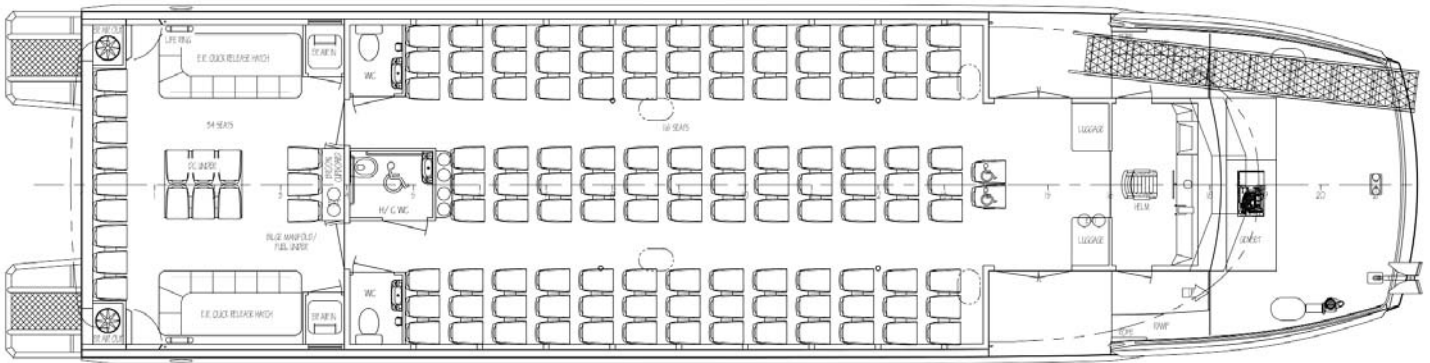
Series II Waterbus Project Brief - 200 Passenger Waterbus



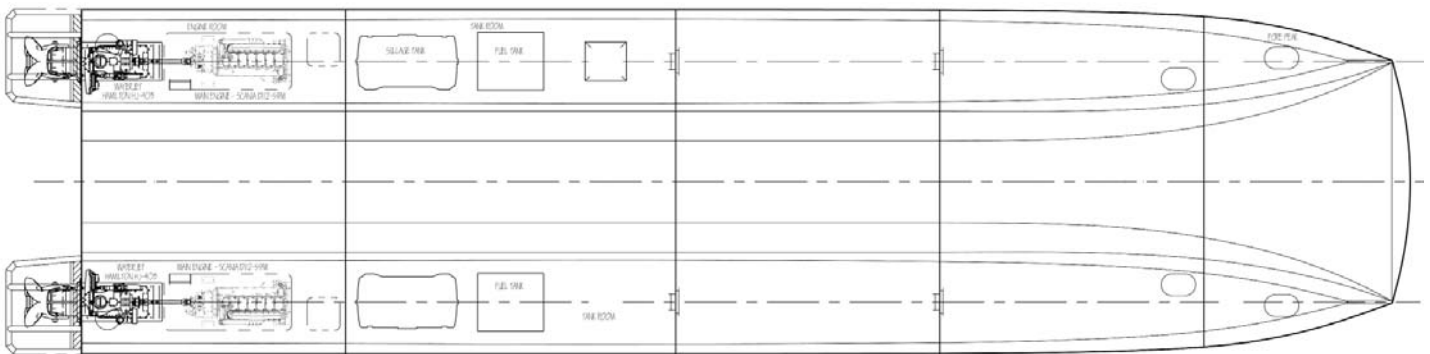
PROFILE VIEW



UPPER DECK



MAIN DECK



BELOW DECK